



**AHP&S**  
 ARCHITECTURAL  
 PROFESSIONAL ENGINEER  
 116 ROOSEVELT AVENUE, SUITE 200 / P.O. BOX 405 / ALBANY, GEORGIA 31702 / (229)355-0036

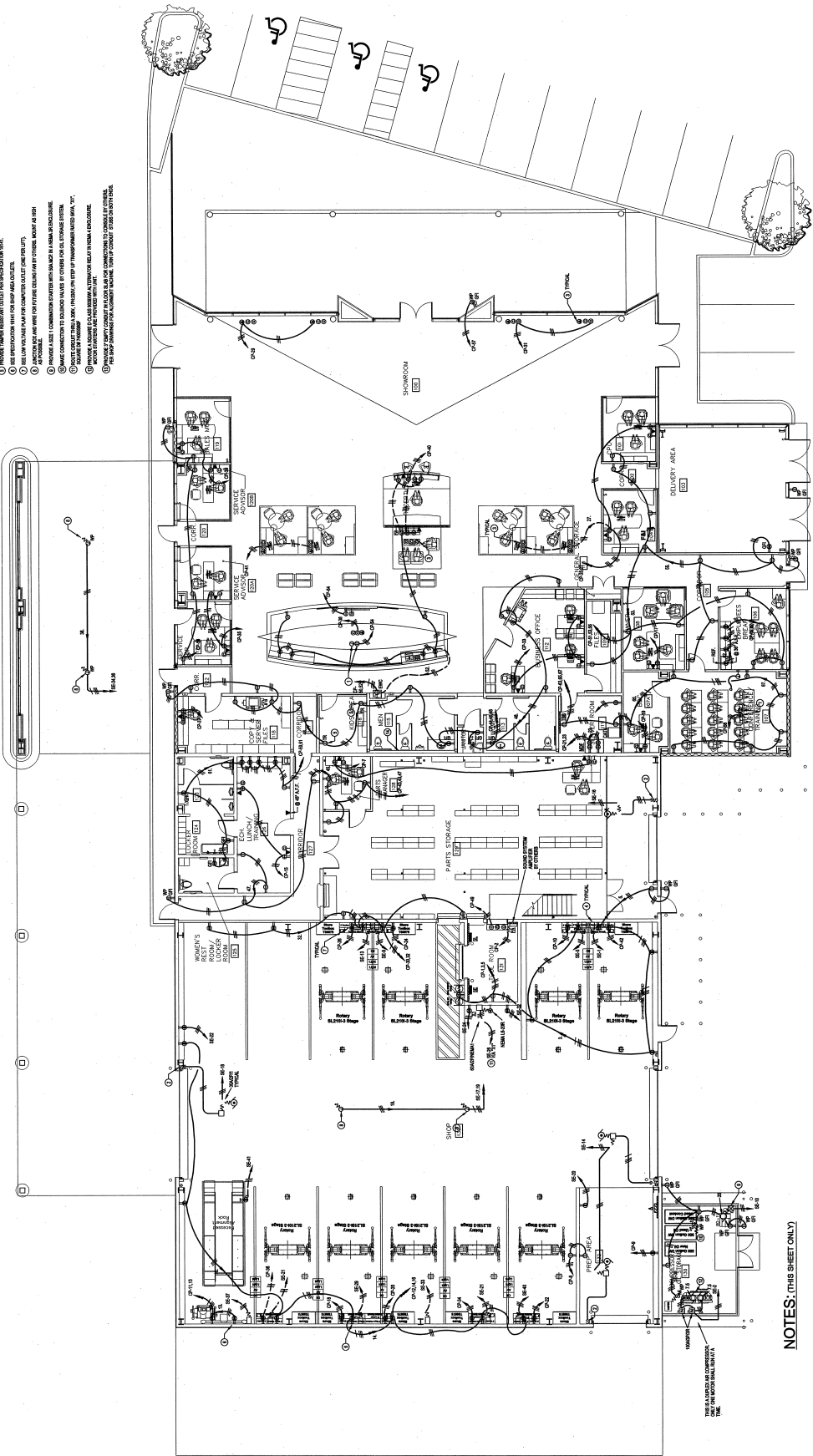
Drawn	CTS
Checked	JKM
Date	22 OCT 07
Arch Proj #	0703
By	
Revised	
Mr.	
Dir.	

**NEW BMW DEALERSHIP**  
**ALBANY MOTOR CARS**  
**E. OGLETHORPE BLVD.**  
**ALBANY, GEORGIA**

Yielding  
 Wakeford & McGehee Architects, P.C.

Sheet No. **E3**  
 Drawing

- NOTES: (THIS SHEET ONLY)**
1. LOCATED IN FIELD FOR PROTECTION.
  2. CONTROL SWITCH FOR OVERHEAD DOOR OPERATED WITH HORN.
  3. ALL ELECTRICAL WORK SHALL BE IN ACCORDANCE WITH THE NATIONAL ELECTRICAL CODE (NEC) AND THE STATE OF GEORGIA.
  4. ALL ELECTRICAL WORK SHALL BE IN ACCORDANCE WITH THE NATIONAL ELECTRICAL CODE (NEC) AND THE STATE OF GEORGIA.
  5. ALL ELECTRICAL WORK SHALL BE IN ACCORDANCE WITH THE NATIONAL ELECTRICAL CODE (NEC) AND THE STATE OF GEORGIA.
  6. ALL ELECTRICAL WORK SHALL BE IN ACCORDANCE WITH THE NATIONAL ELECTRICAL CODE (NEC) AND THE STATE OF GEORGIA.
  7. ALL ELECTRICAL WORK SHALL BE IN ACCORDANCE WITH THE NATIONAL ELECTRICAL CODE (NEC) AND THE STATE OF GEORGIA.
  8. ALL ELECTRICAL WORK SHALL BE IN ACCORDANCE WITH THE NATIONAL ELECTRICAL CODE (NEC) AND THE STATE OF GEORGIA.
  9. ALL ELECTRICAL WORK SHALL BE IN ACCORDANCE WITH THE NATIONAL ELECTRICAL CODE (NEC) AND THE STATE OF GEORGIA.
  10. ALL ELECTRICAL WORK SHALL BE IN ACCORDANCE WITH THE NATIONAL ELECTRICAL CODE (NEC) AND THE STATE OF GEORGIA.



**ELECTRICAL POWER FLOOR PLAN**  
 SCALE: 1/8"=1'-0"

- NOTES: (THIS SHEET ONLY)**
1. ALL ELECTRICAL WORK SHALL BE IN ACCORDANCE WITH THE NATIONAL ELECTRICAL CODE (NEC) AND THE STATE OF GEORGIA.
  2. ALL ELECTRICAL WORK SHALL BE IN ACCORDANCE WITH THE NATIONAL ELECTRICAL CODE (NEC) AND THE STATE OF GEORGIA.